



KINGSWAY

Recent Items from Kingsway Models

London Transport TB Bromley Garage

New extended version , the model measures 22" wide by 10" deep.

The roof pieces may be left removable for access, although it is recommended that the walls are fixed to a base.



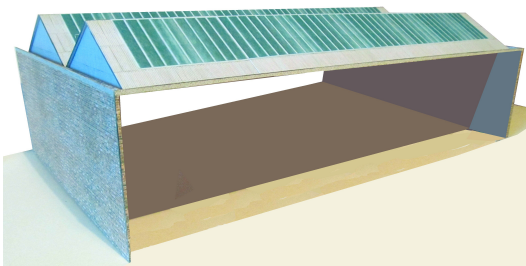
£16



London Transport HD Harrow Weald Garage

New extended version , the model measures 15" wide by 8" deep.

The roof pieces may be left removable for access, although it is recommended that the walls are fixed to a b



An extension kit (HDX) is also available comprising matching sidewalls and roof sections. This can be fitted behind to double the covered area.

HD £16

HDX £14



Southdown SHH Haywards Heath bus station

A model of this Southdown bus station, The model is viewable 'all round' and includes paving, measuring 8" by 17".

The architecture of the original bus station was designed to accommodate a gentle slope and although the model sits on a flat base , it will require a slightly sloping road surface.

£16



Trent Matlock Depot TM

A model of the Trent Depot in Matlock as it was in the seventies. Notably the right hand entrance was too low to accommodate double deckers and none were ever allocated. It measures 21" wide by 8" deep, and has 'posable' doors.

£16



All prices include first class UK postage.

The whole range may be viewed , and is available from www.kingswaymodels.com